

Childcare by Design is owned and operated by **Dr Brenda Abbey** who has extensive experience in early childhood settings including over 15 years in the childcare industry.

---

**Brenda's experience includes:**

- + Director of private and community centres
- + Validator with the QIAS
- + Resource Officer (licensing, monitoring) with the Queensland Department of Communities
- + Writer of modules for Diploma of Children's Services and editorials for newspapers
- + Lecturer at University and TAFE
- + Conference Presenter

**Her qualifications include:**

- + Doctor of Philosophy (Education)
- + Master of Education (Educational Administration)
- + Bachelor of Education (Early Childhood)
- + Diploma of Teaching (Early Childhood)
- + Justice of the Peace (Qualified)

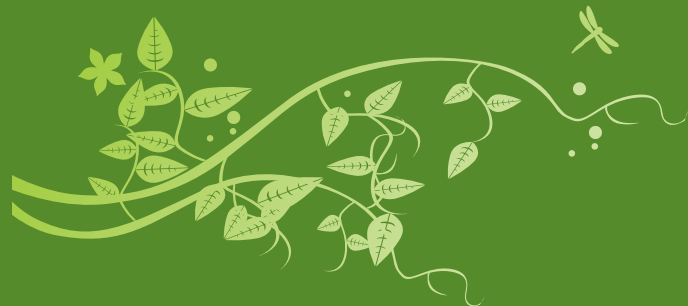


Contact Childcare by Design for an appointment to discuss the specific needs of your childcare centre

Dr Brenda Abbey  
Mobile: 0419 661 921  
Email: [info@childcarebydesign.com.au](mailto:info@childcarebydesign.com.au)

---

[www.childcarebydesign.com.au](http://www.childcarebydesign.com.au)



CHILDCARE  
*by Design*



Supporting the development and operation of high quality, profitable and individualistic childcare centres

---

DR BRENDA ABBEY





Childcare by Design provides the advice and practical support that developers and prospective and current licensees require to establish and operate high quality, profitable and individualistic centres.

**This advice and support is:**

- + Precise, concise and timely
- + Tailored to the unique needs of each centre
- + Consistent with all relevant legislation and the Quality Improvement and Accreditation System (QIAS)
- + Certain to value-add to your business operations by ensuring that your time, money and effort are used to best advantage



**Services to developing centres include:**

- + Project management
- + Plan appraisal
- + Liaison with relevant government and regulatory bodies
- + Licence preparation and submission
- + Coordination of progressive and final inspection with builder
- + Coordination of final inspection with state government department
- + Registration with the National Childcare Accreditation Council
- + Advice with insurances
- + Submissions to Family Assistance Office
- + Development of centre policies and procedures and their implementation
- + Recommendations in purchase of resources, furniture and equipment
- + Advice with setting up management systems
- + Staff recruitment, selection and training

**Services to licensed centres include:**

- + Identify and manage compliance issues
- + Review centre policies and procedures
- + Respond to parent complaints/concerns
- + Mentor director
- + Prepare for re-licence and the QIAS
- + Coordinate modifications to building design
- + Staff recruitment, selection and training

Training provided by **Childcare by Design** skills your staff to deliver high quality programs for children and to contribute to the effective and profitable operations of your centre.

**This training:**

- + Recognises the current attributes of both individuals and the team, and builds on these
- + Provides practical strategies staff can implement immediately
- + Is consistent with all relevant legislation and the QIAS
- + Is accompanied by ongoing mentor support
- + Covers topics such as behaviour management, programming, and effective communication

