

JUANITA NIELSEN CENTRE UPGRADE

city of villages



Corner view of building and Juanita Nielsen Garden

NEESON MURCUTT ARCHITECTS

JUANITA NIELSEN CENTRE UPGRADE

city of villages



Corner view of building at Nicholson and Dowling Streets

NEESON MURCUTT ARCHITECTS

JUANITA NIELSEN CENTRE UPGRADE

city of villages

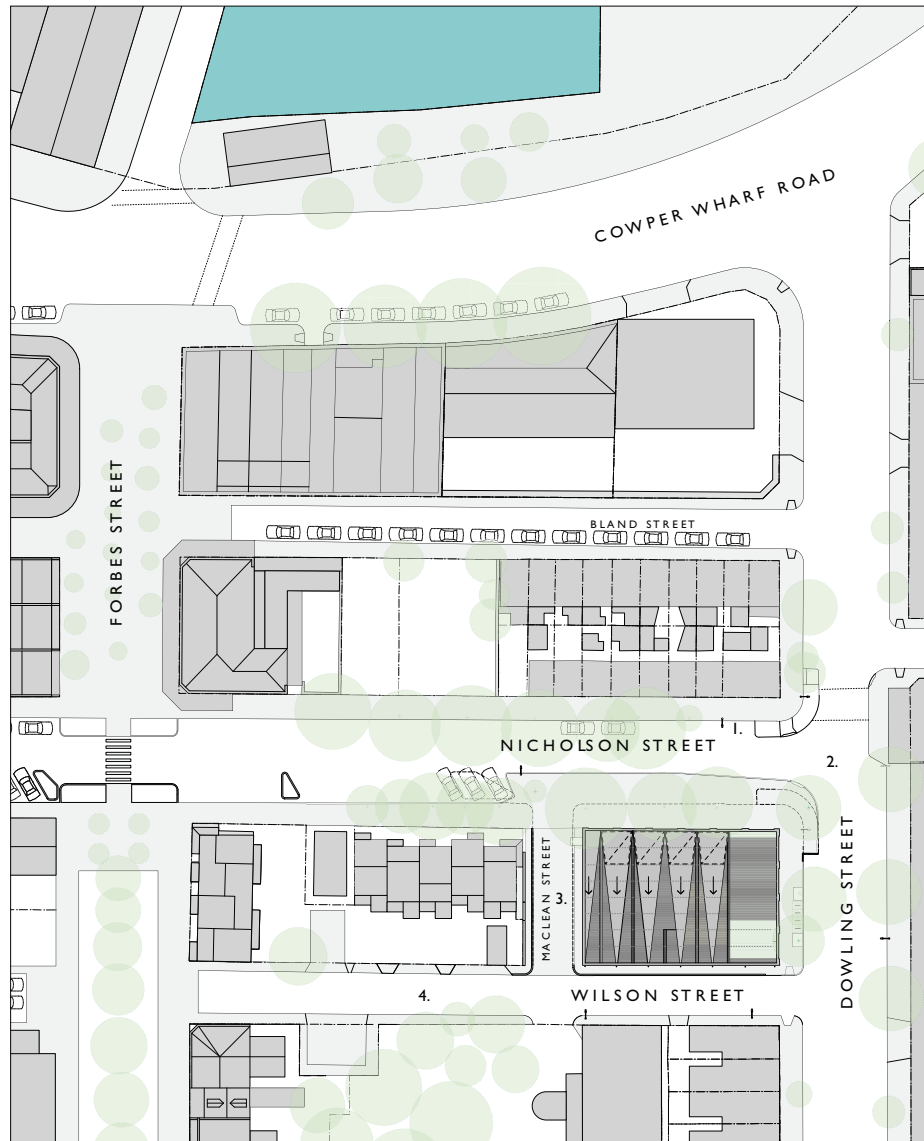


Interior view

NEESON MURCUTT ARCHITECTS

JUANITA NIELSEN CENTRE UPGRADE

city of villages



Site plan 0 10m 20m



1. Adjacent terraces
Nicholson Street



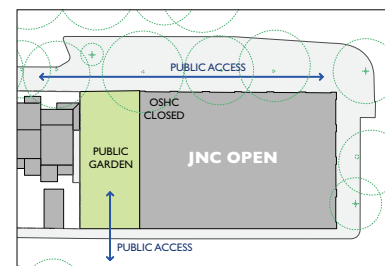
2. Prominent Corner
Nicholson & Dowling Streets



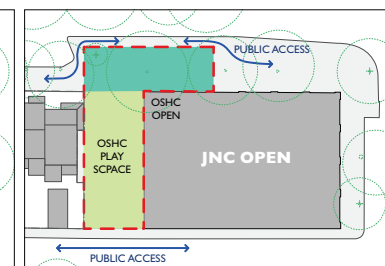
3. Undressed Edge
Maclean Street



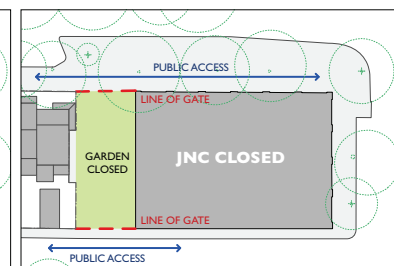
3. Community thoroughfare
Wilson Street



Public Domain Configuration 1



Public Domain Configuration 2

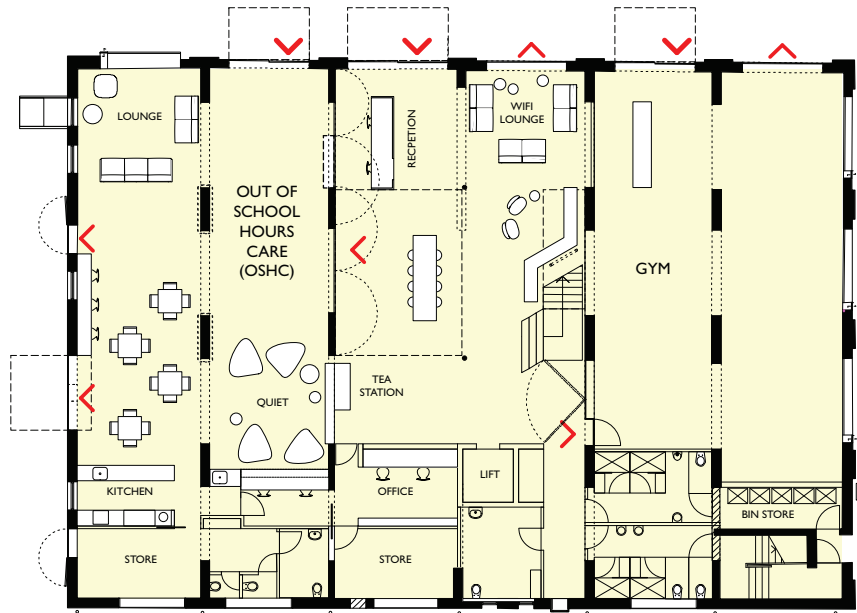


Public Domain Configuration 3

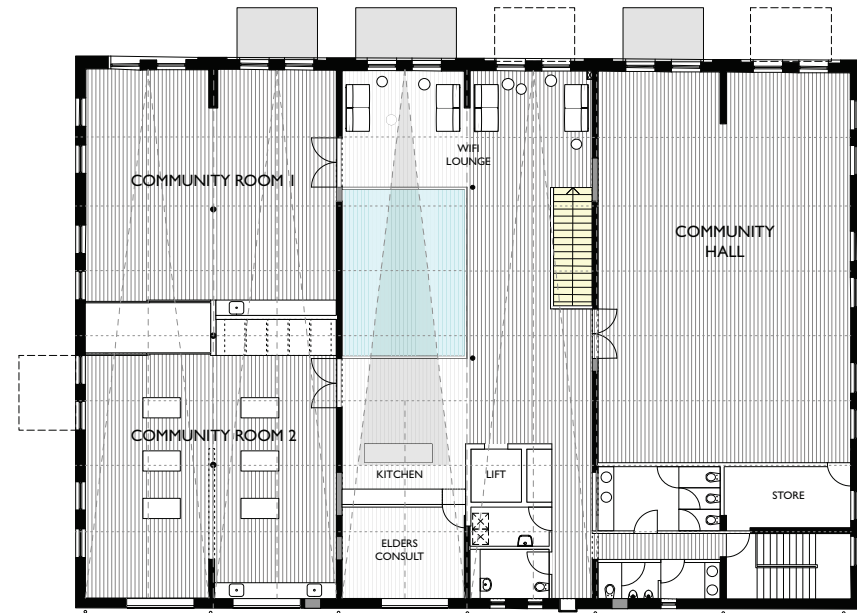
NEESON MURCUTT ARCHITECTS

JUANITA NIELSEN CENTRE UPGRADE

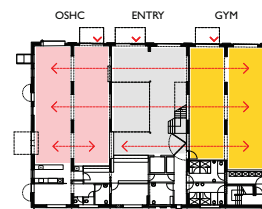
city of villages



Ground floor plan 0 5m



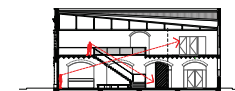
First floor plan 0 5m



Transparency through original bays



Daylight through timber roof trusses



Connection through Void

NEESON MURCUTT ARCHITECTS

JUANITA NIELSEN CENTRE UPGRADE

city of villages



East Elevation - Dowling Street



North Elevation - Nicholson Street

HISTORIC FACADES RETAINED



West Elevation - Maclean Street



South Elevation - Wilson Street

HISTORIC FACADES REVEALED



Juanita Nielsen



Signage to dressed edge, 1981



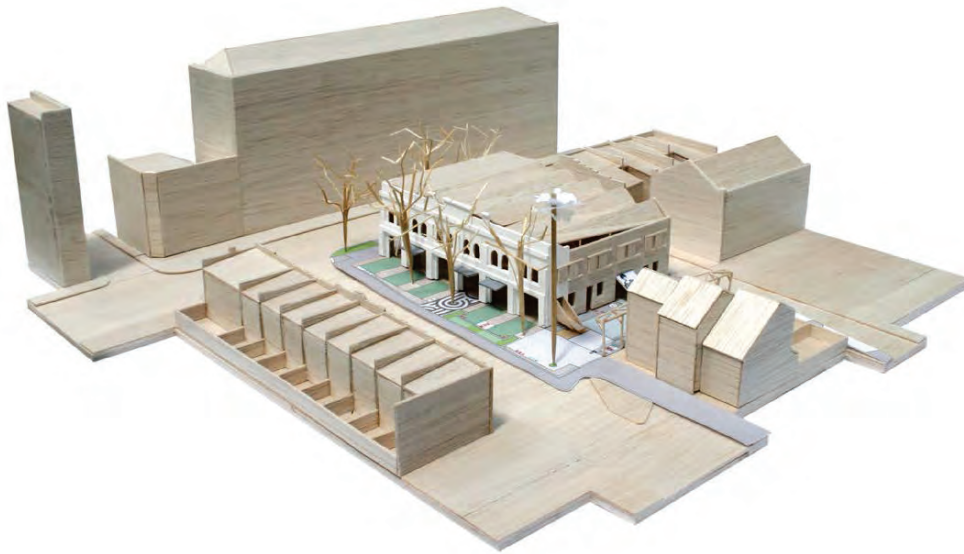
Original Wilson Street facade



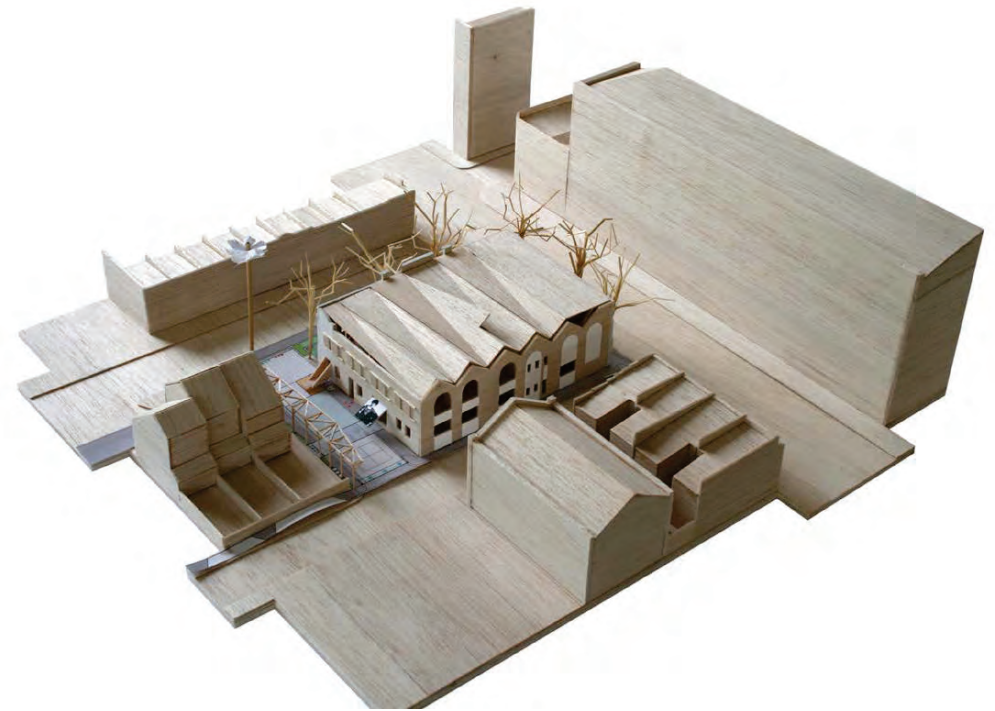
NEESON MURCUTT ARCHITECTS

JUANITA NIELSEN CENTRE UPGRADE

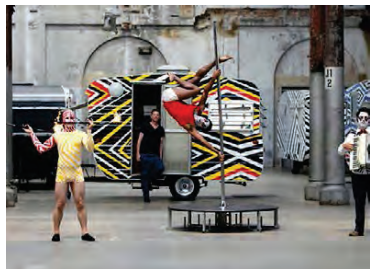
city of villages



Extended Footpath to Nicholson Street - Historic Facade Retained



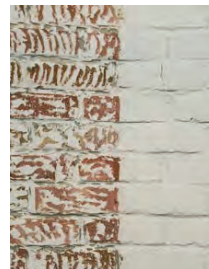
New Public Park in Maclean Street



Travelling Colony, Sydney
Brook Andrew



Andrew Citroen Park, Paris
Gilles Clement & Alan Provost



BritishIndia Warehouse, KL
Kevin Mark Low



Fuji Kindergarten, Tokyo
Takaharu + Yui Tezuka



Passeig de St Joan, Barcelona
Lola Domenech Arquitect



Highline, New York
James Corner Field Operations with Diller Scofidio + Renfro

NEESON MURCUTT ARCHITECTS



Next steps

We will use your feedback on these options to develop detailed designs.

These designs will then be presented to the community for further feedback before a report goes to Council.

You can also see the options online at sydneyyoursay.com.au

Please fill in the feedback form tonight or you can send your comments to:

email – lmorgan@cityofsydney.nsw.gov.au

fax – 02 9265 9566

post – GPO Box 1591

Sydney NSW 2001

Comments must be received by **XXX**

WE ARE HERE

General enquiries

Tel 9265 9333

council@cityofsydney.nsw.gov.au

cityofsydney.nsw.gov.au

If you would like to speak with a Council officer about this project, you can contact Lise Morgn, project Manager on 02 9265 9333 or at lmorgan@cityofsydney.nsw.gov.au

Project timeline

Architects appointed
July 2012

Development of concept
design options
October – December 2012

Options presented to the
community for feedback
February 2013

Community feedback
incorporated into developed
design
February - March 2013

Development Application
lodged
End March 2013

Public Comment invited on
Development Application
April 2014

Community
feedback

Community
feedback

NEESON MURCUTT ARCHITECTS